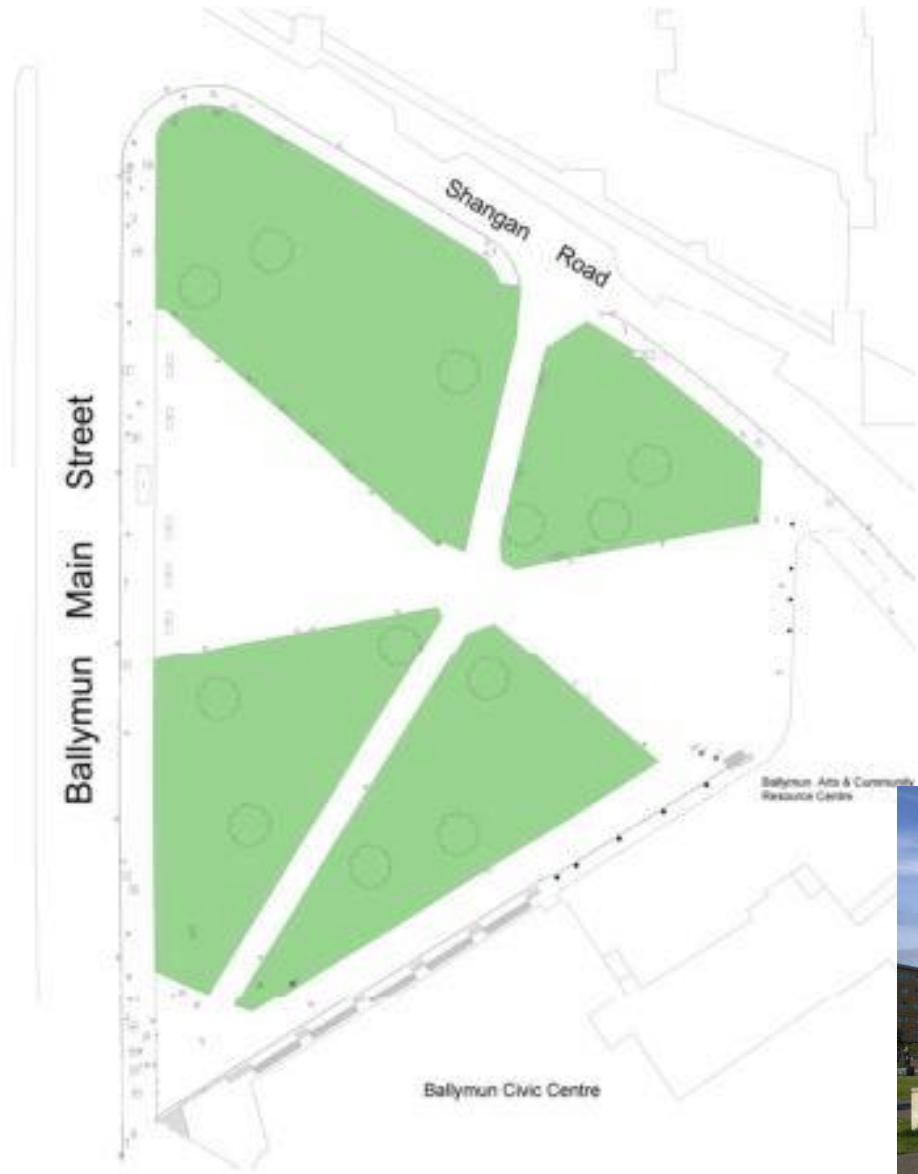


Ballymun (Plaza) Town Centre Park

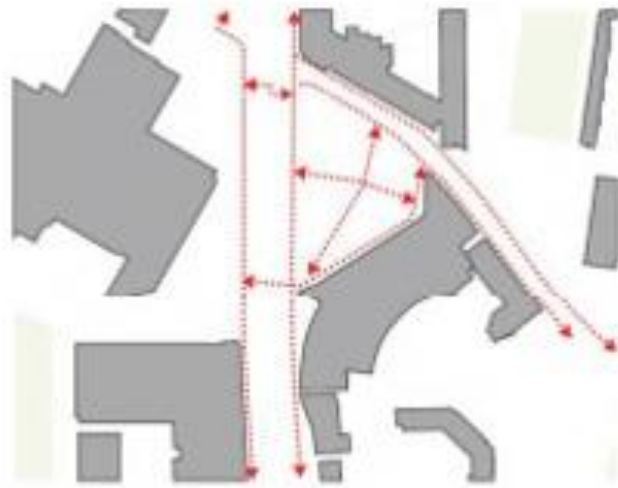


Existing Layout – Temporary since BRL

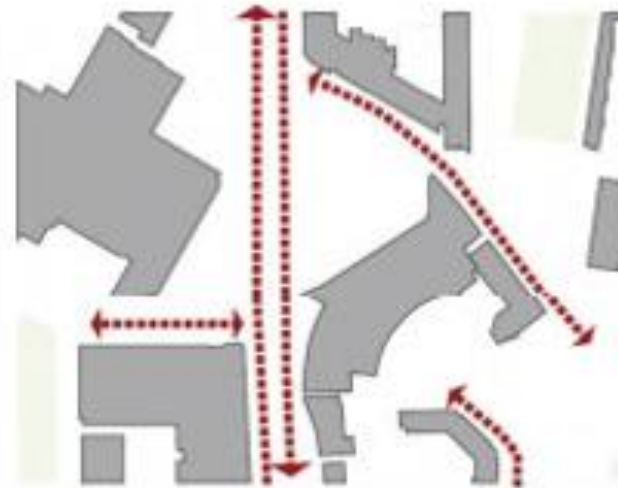
Existing Layout



Site Analysis



key pedestrian movement



key vehicular movement



active frontages and nodes

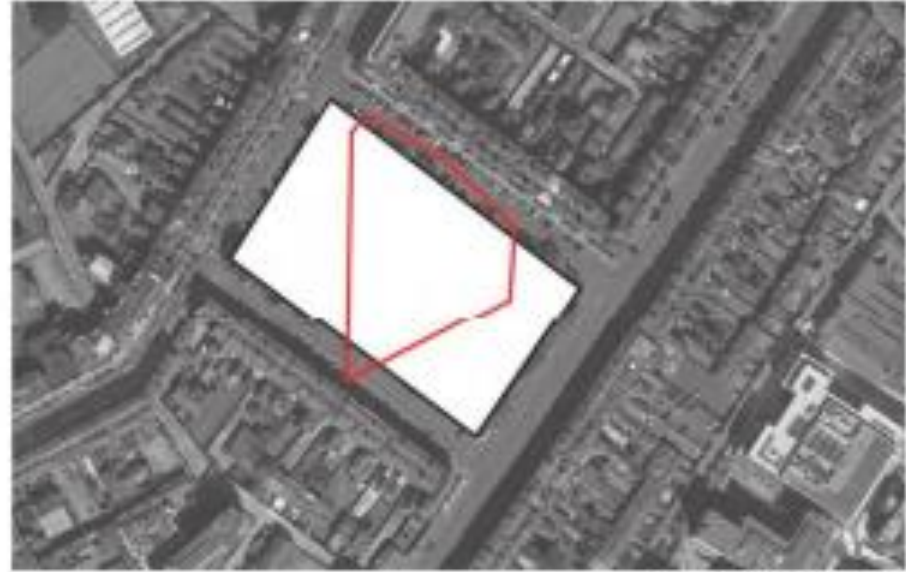


sun movement

Site Analysis: Comparison



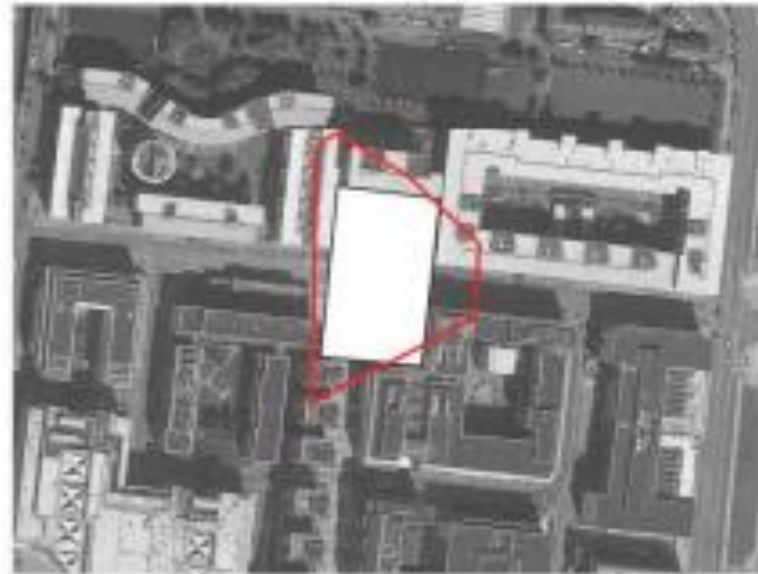
ballymun plaza



fitzwilliam square

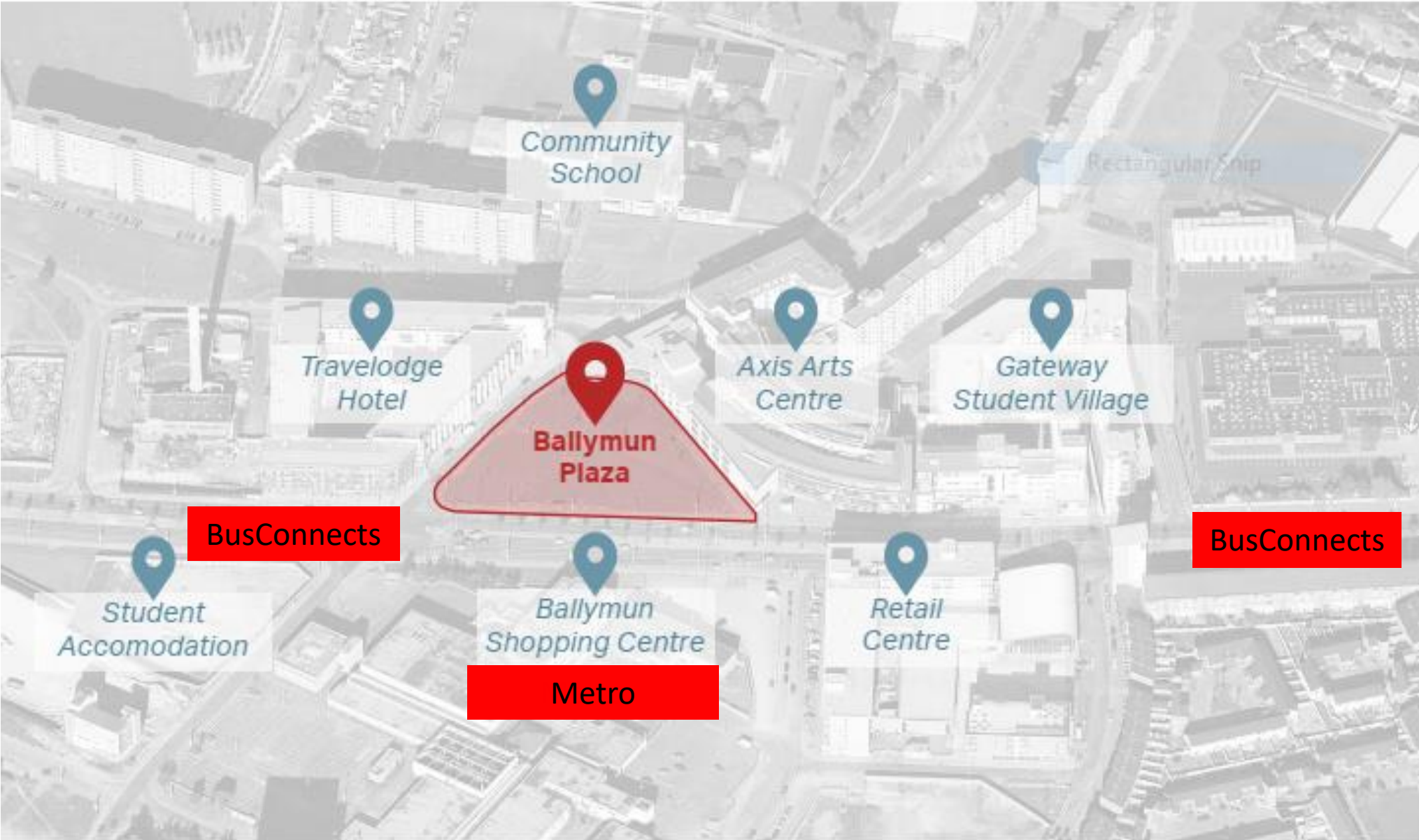


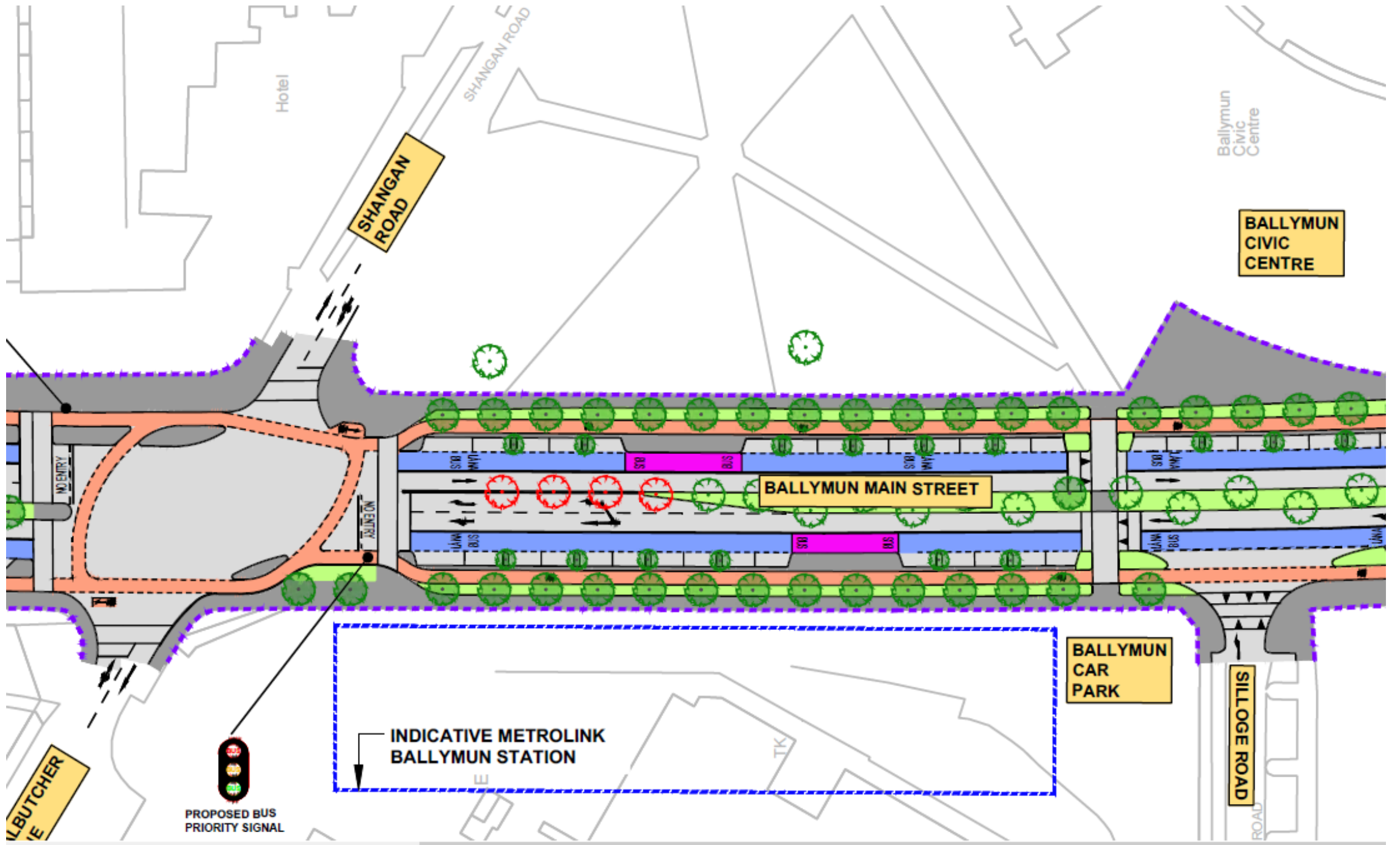
wolfetone square



mayor square

Site Context





Hotel

SHANGAN ROAD

Ballymun Civic Centre

BALLYMUN CIVIC CENTRE

BALLYMUN MAIN STREET

BALLYMUN CAR PARK

SILLOGE ROAD

INDICATIVE METROLINK BALLYMUN STATION

PROPOSED BUS PRIORITY SIGNAL

BUTCHER

TK

Project Aim:

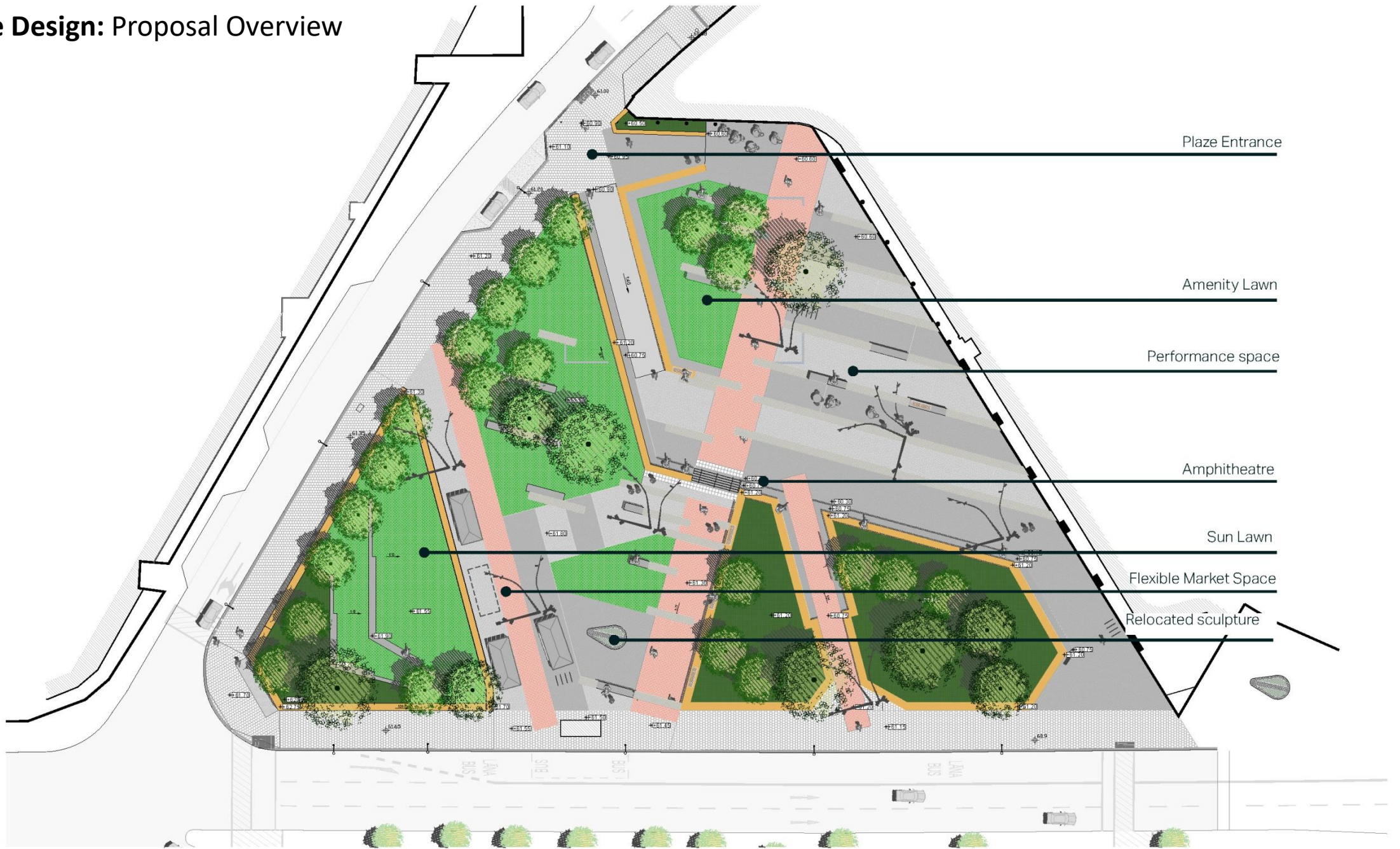
In line with the Ballymun Local Area Plan, to create an identifiable central core within Main Street to act as a focal point for Ballymun. This should include the improvement and visual upgrading of the plaza space in front of Axis to define the space and improve its use as an outdoor space for events.

To create a landmark space that will be at the heart of Ballymun.

Redline Boundary



Site Design: Proposal Overview

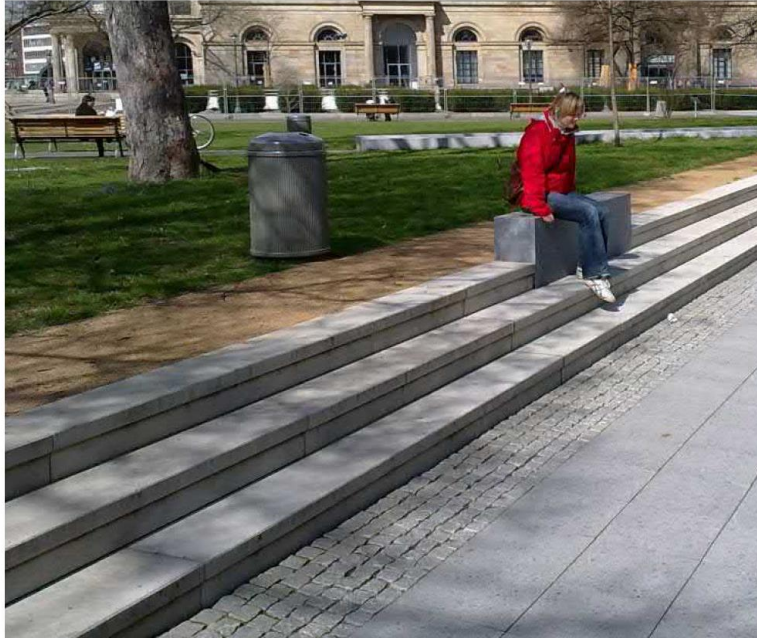
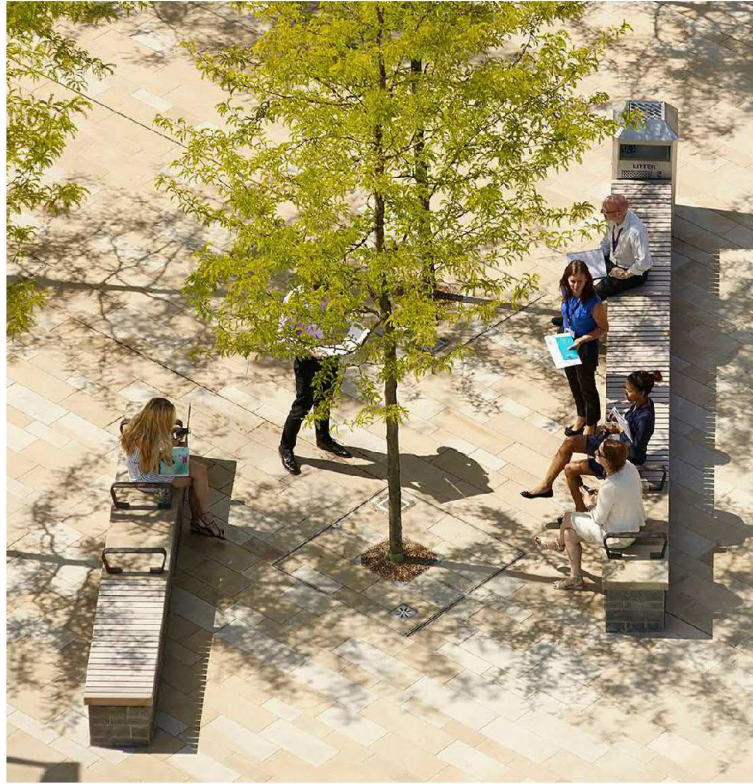


Site Design Public Realm Principles

A system of integrated steps and landings gently unfolds throughout Ballymun Plaza, allowing small pockets of public realm to remain contained and to a comfortable human scale. Each of these areas - hard and soft - are contained using concrete seat walls and pockets of screening plants, striking a balance of comfort, containment and landscape interest across the scheme. Open spaces are overlooked from all directions providing safe places to walk, play and sit.

A geometric system of seating, paving and planting areas are arranged across a site-wide geometry so as to ensure a cohesion of design elements while creating unique and individual spaces. ▶

A range of hard and soft landing areas are divided into separate spaces using concrete seating and stepped areas - creating individual zones that cater for the human scale of comfort and movement. ▼



Emergency Vehicle Access is provided across the sloping site through the adoption of a ramp that cuts through the main seating area towards the north of the site. ◀

Design Strategy Softscape

A varied palette of plant materials is proposed across the scheme, providing a rich variety of colour, texture and year-round interest.

Site-wide Planting Palette

Feature Trees



Prunus avium 'Plena'



Platanus acerifolia

Specimen Trees



Betula utilis 'Jacquemontii'



Acer griseum

Shrub Mix & Ground Plane



Polystichum setiferum



Stipa arunifera



Carex oshimensis 'Everest'



Expansive lawn and seating areas



Raised recreational lawn

Design Strategy: Planting



Sipa arundinacea



Album



Camassia



Geranium macrorrhizum



Eryanthum 'Bawles mauve'



Polystichum setiferum



Hebe 'Great Orme'



Heuchera



Nepita Six hills giant



Calamagrostis x acutiflora



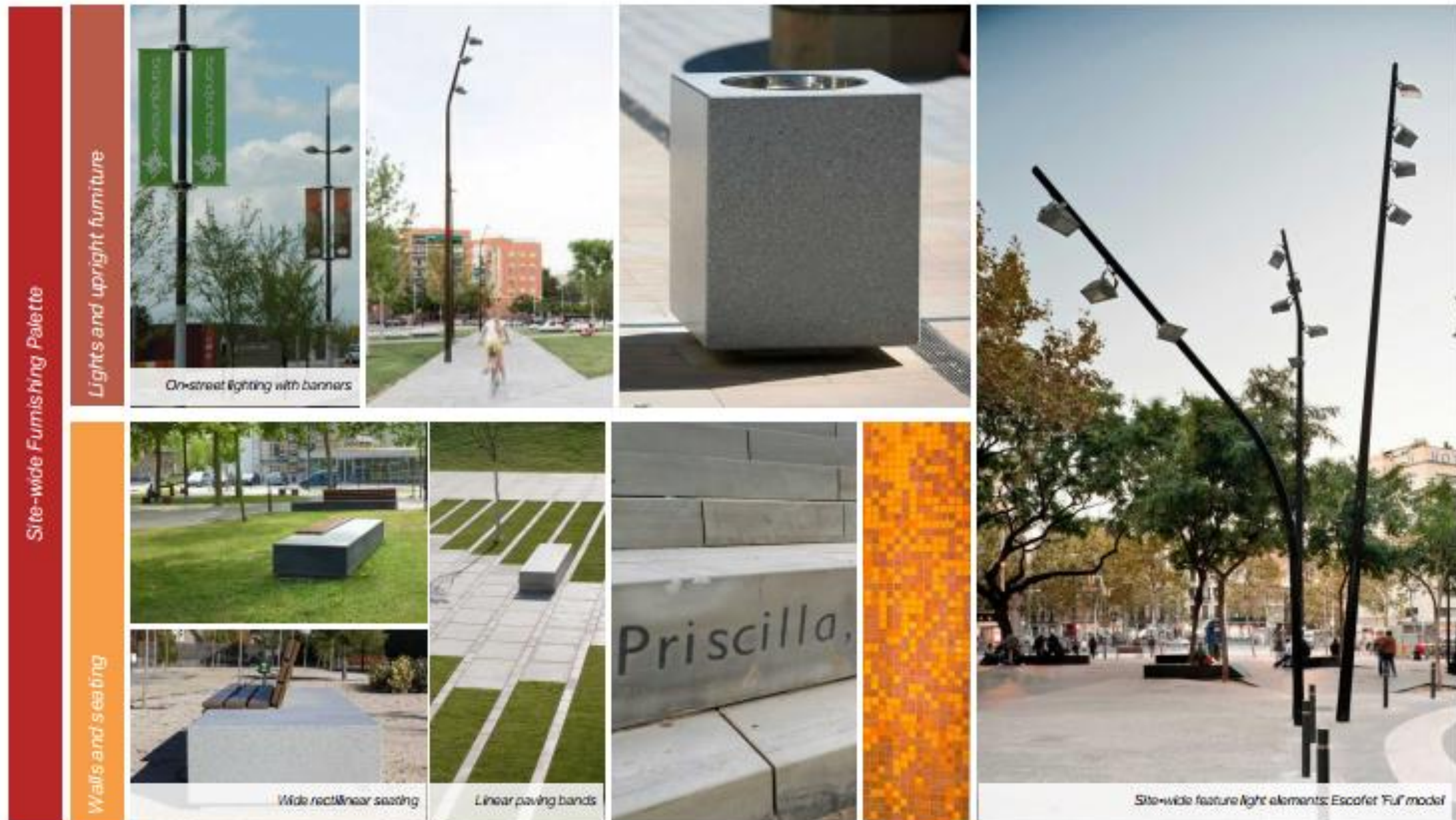
Convolvulus cneorum

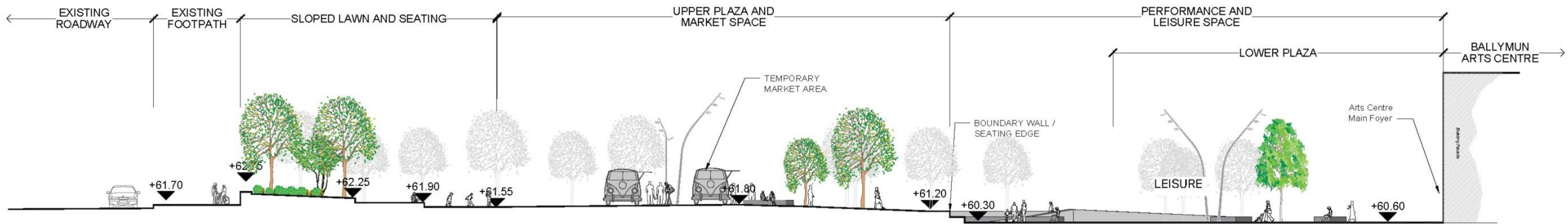


Sarcococca

Design Strategy Furnishing and detail

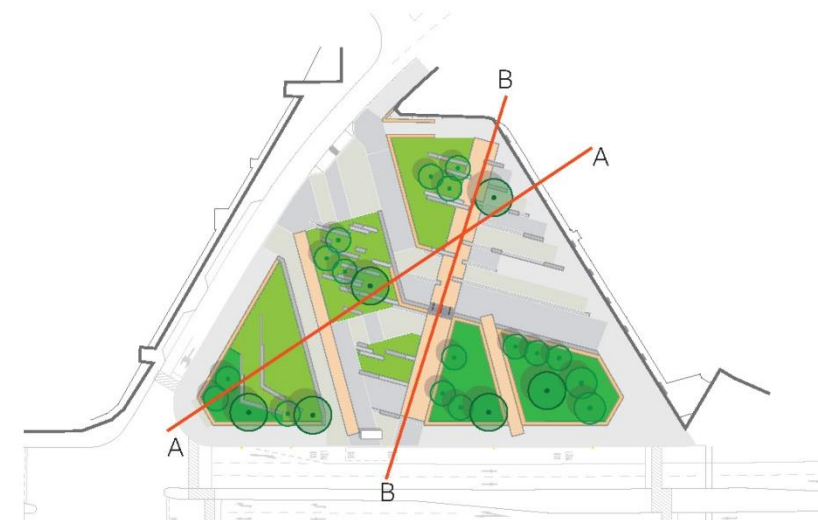
In accordance with the varied programme of the site and its context, an indicative palette of site furnishings is shown:



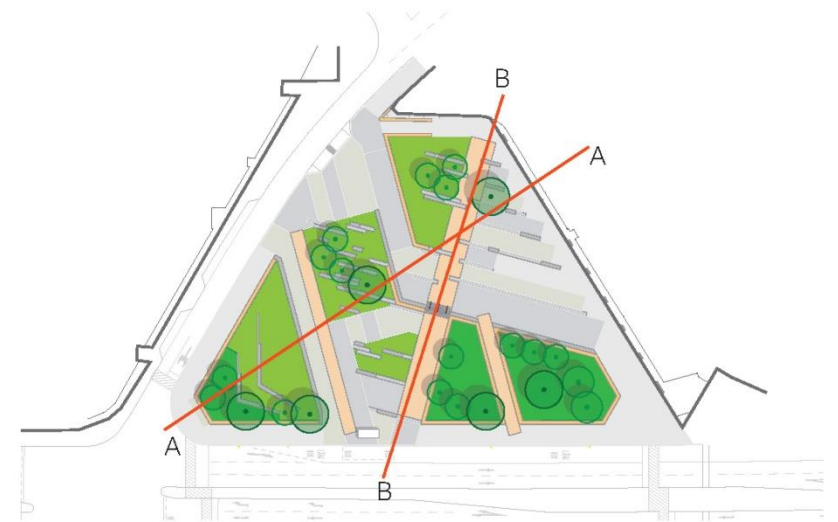
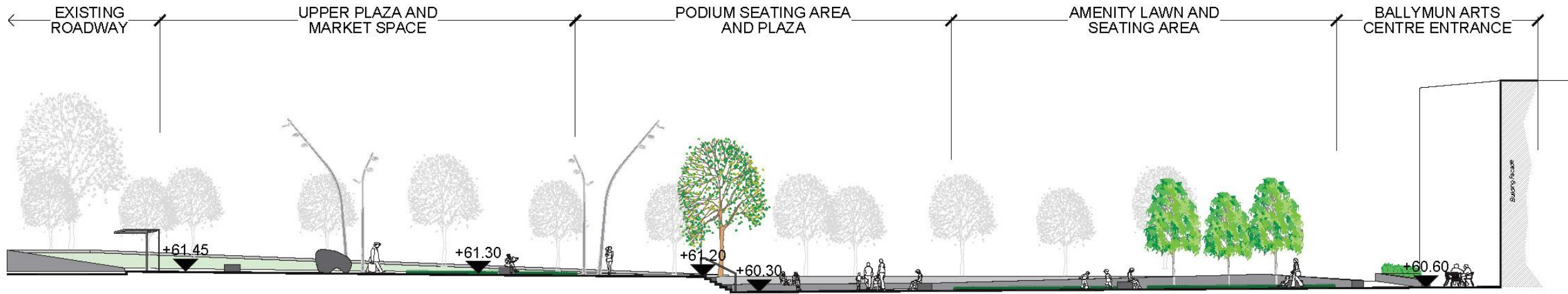


Section A - A

Section through plaza space



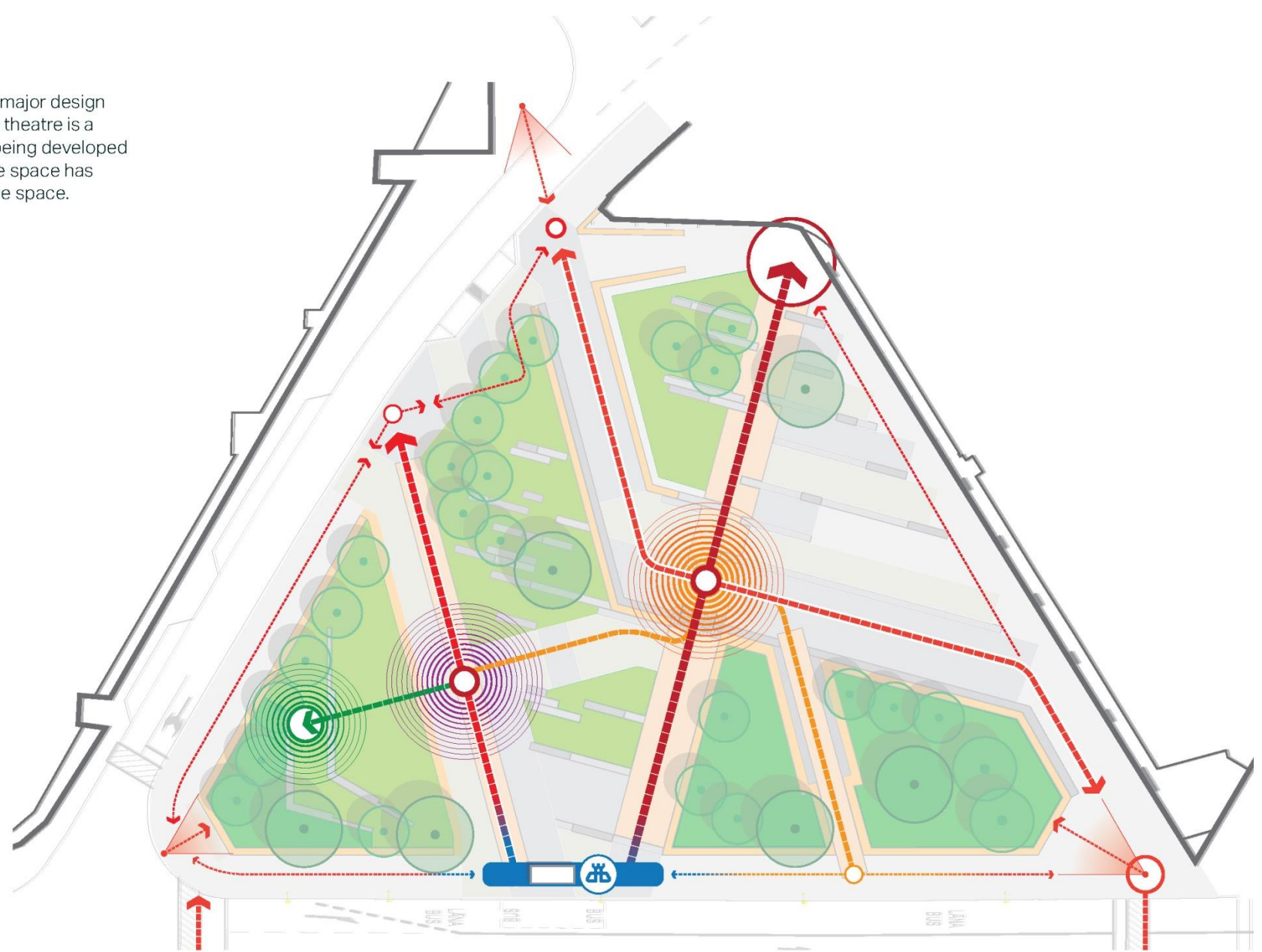
Sections

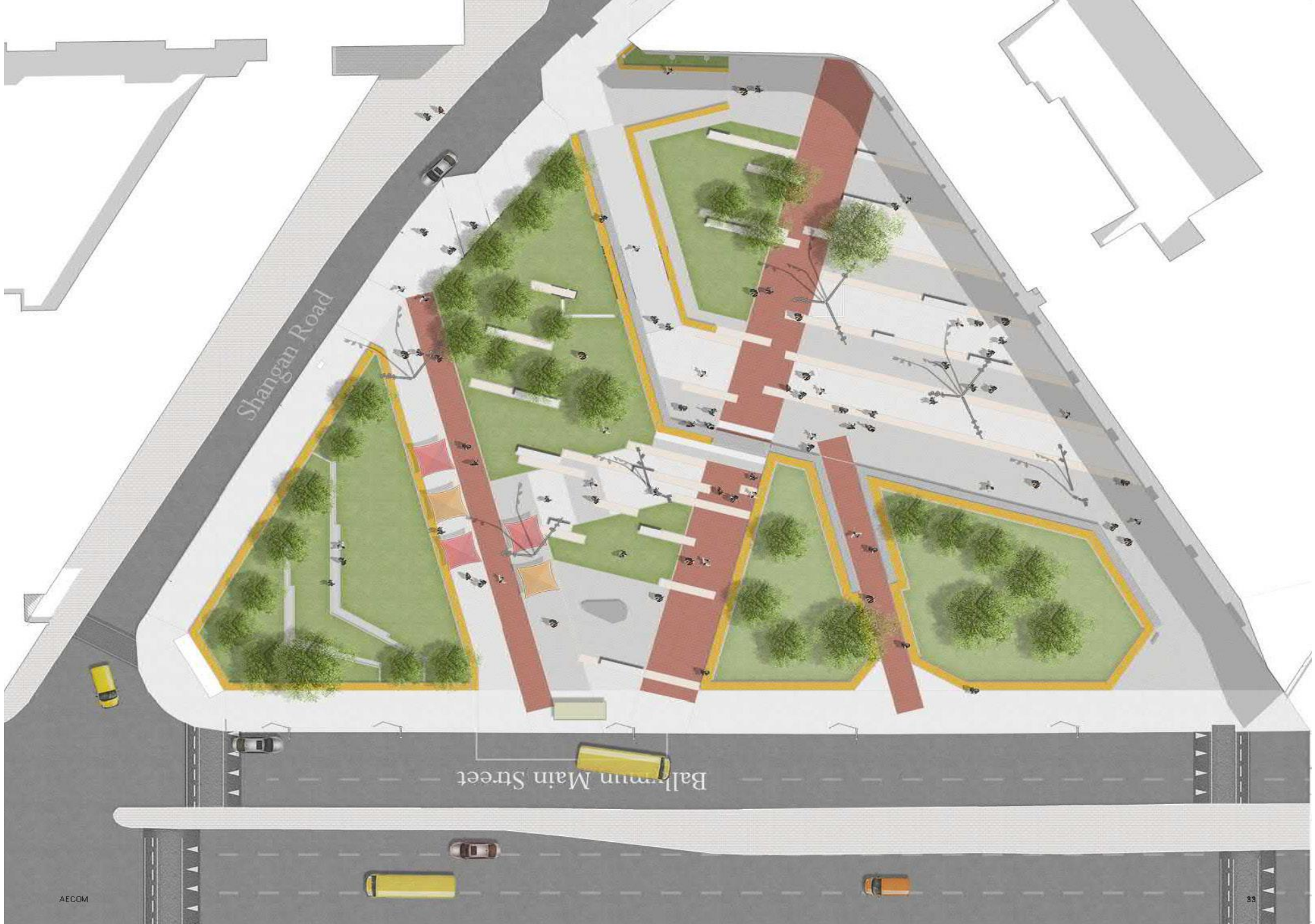


Sections

Design Strategy Movement

The plaza space has been designed to look at the major design lines and movements through the space. The Axis theatre is a focal point to the square with a strong desire line being developed to give the main pathway structure to the park. The space has been defined with a number of linkages through the space.





Shangan Road

Ballmain Main Street

END